

\$3,500,000 - 160 Hamilton Creek Trl, SILVERTHORNE

MLS® #S1031533

\$3,500,000

6 Bedroom, 7.00 Bathroom, 7,445 sqft
Residential on 4.85 Acres

HAMILTON CREEK SUB - BENCHES, SILVERTHORNE, CO

Surrounded by National Forest, this southwest, ranch-style home is unrivaled in Summit County. Featuring six bedrooms, seven bathrooms, an outdoor pool, a large great room, and a theater room, you'll be able to comfortably host many guests. Sitting on 4.8 acres, this home has sweeping and unhindered views of the Gore and Ten-Mile Range from each bedroom. Use the bonus room above the garage as a caretakers unit or private living space. Store all your toys in the six-car garage. Welcome to Summit!

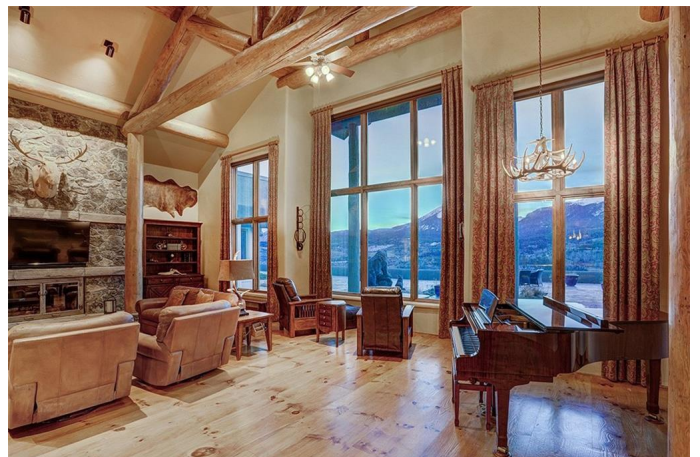
Built in 2001

Essential Information

MLS® #	S1031533
Price	\$3,500,000
Bedrooms	6
Bathrooms	7.00
Total Sq. Ft	7,445
Acres	4.85
Year Built	2001
Type	Residential
Sub-Type	Single Family Residence
Style	Ranch
Status	Active

Community Information

Address	160 Hamilton Creek Trl
Subdivision	Hamilton Creek Sub - Benches



Area Silverthorne
County Summit
State CO
Zip Code 80498

Amenities

Utilities Electricity Available, Natural Gas Available, Municipal Utilities, Phone Available, Septic Available, Trash Collection, Water Available, Cable Available
Features Borders National Forest
Parking Attached, Garage, Three or more Spaces
Garages Attached, Garage, Three or more Spaces
View Golf Course, Mountain(s), Trees/Woods
Has Pool Yes
Pool Private
Location Borders National Forest

Interior

Interior Carpet, Tile, Wood
Interior Features Fireplace, Main Level Master, Skylights, Cable TV, Vaulted Ceiling(s), Jetted Tub
Appliances Built-In Oven, Dishwasher, Gas Cooktop, Disposal, Microwave, Refrigerator, Range Hood, Wine Cooler, Dryer, Washer, Trash Compactor
Heating Radiant
Fireplace Yes
Fireplaces Gas

Exterior

Exterior Stucco
Lot Description Borders National Forest
Windows Skylight(s)
Roof Asphalt
Construction Stucco

Additional Information

Date Listed November 19th, 2021

Listing Details

Listing Office Christie`s International Real Estate CO LLC



Copyright © 2022 SAR MLS. The information displayed herein was derived from sources believed to be accurate, but has not been verified by SAR MLS.

Buyers are cautioned to verify all information to their own satisfaction.

This information is exclusively for viewers' personal, non-commercial use. Any republication or reproduction of the information herein without the express permission of the SAR MLS is strictly prohibited.

Listing information last updated on May 19th, 2022 at 6:21am MDT